



PORSCHE



# Exclusive Cayman

The Ultimate Personalization

# Contents

<b>Philosophy</b>	<b>2</b>
<b>Exclusive examples</b>	<b>4</b>
<b>Colors and materials</b>	<b>18</b>
<b>Exclusive options</b>	<b>20</b>
<b>Designing your Porsche</b>	<b>40</b>
<b>Service</b>	<b>41</b>



# Philosophy

## **Exclusivity. Individuality. Craftsmanship.** **Concepts which have always been associated with Porsche.**

Porsche Exclusive stands for the individual personalization of your vehicle, direct from the factory. You tell us what you want, and we will do our utmost to give it to you—provided, of course, that it is technically feasible and does not compromise quality.

When customizing a car, it's not enough just to use the best available materials. Our overriding principle has always been to make full use of the traditional skills of our craftsmen, carrying out the work by hand. Our specialists have years of experience in the handcrafting of decorative hardwoods, enabling us to bring out the individual character of these superb materials.

What about Carbon Fiber? Light and extremely durable. Expressing all the excitement of the racetrack. Or stainless steel? Very strong, polished and with a chrome finish—pleasing to the eye and extremely resistant to heat and corrosion. Or another truly brilliant possibility: highly polished anodized aluminum.

Would you like to upgrade the interior or exterior of your car, or add an AeroKit or sport exhaust system? Your wish is our command.





# Exclusive examples

**Vehicle: Porsche.**

**Details: Porsche Exclusive.**

A Porsche is more than just a car. It is also an expression of the personal freedom, taste and lifestyle of its driver.

Porsche Exclusive offers you a wide range of individual extras so you can personalize your car to your own unique requirements. Straight from the factory. Visual and technical enhancements, for both the interior and exterior. And always just as you want them.

The following pages will assist you in planning your Porsche. Consult with your Porsche dealer to create your Cayman tailor-made to your exact requirements—down to the finest detail. Something unique with exquisite craftsmanship. Explore your options and be inspired.



*Cayman S*



# spirited

Cayman S in Basalt Black Metallic

**Customizable.**  
**But uncompromising.**

Start with the Cayman Aerokit. Add a sport exhaust system with sport tailpipe. And sport bucket seats with a Porsche Crest. The result? A Cayman personalized without compromise. Completely, utterly and truly your Porsche.

For more information on the equipment details of the Cayman S in Basalt Black Metallic, contact your authorized Porsche dealer.













*Cayman S*





# compelling

Cayman in Aqua Blue Metallic

**Fancy a return to normality?  
Wrong car.**

An exterior Aluminum-Look package offers the perfect complement to the fluid lines of the Cayman and head-turning Aqua Blue Metallic sheet metal. Add rear apron grilles and aluminum PDK selector accents, and you've got

a car that is far from normal. And perfectly Porsche. To learn more about the equipment details of the Cayman in Aqua Blue Metallic, contact your authorized Porsche dealer.













*Cayman*



PORSCHE

+  
M  
-

P  
R  
N  
D

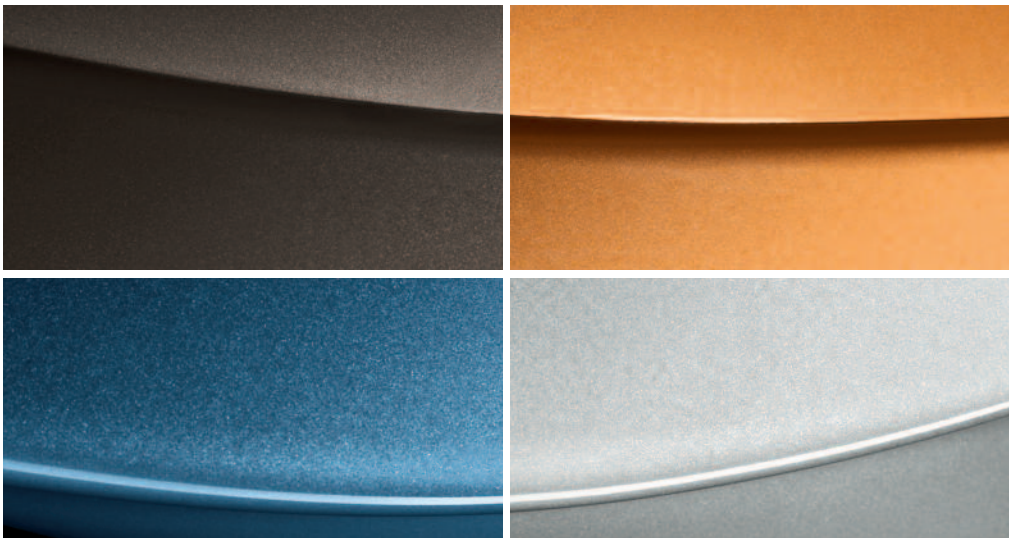
# Colors and materials

**Exceptional, extravagant,  
exquisite, excellent, exact.**

**In a word: Exclusive.**

We offer an exclusive range of colors and materials for you to choose from. Leather, fine-grained woods, Carbon Fiber, aluminum and stainless steel can be selected to enhance the interior.

Every component we use has been tested and approved, ensuring that your Porsche remains a Porsche, but one that embodies your personal style.



Selection of special/individual colors: Marrone Metallic, Nordic Gold Metallic, Azurro California Metallic, Polar Silver Metallic

## **Leather**

Leather is a traditional natural material—a true classic. Items made of leather are both timeless and hard-wearing.



## **Alcantara®**

This high-quality material is easy-care, washable and has a pleasant feel.



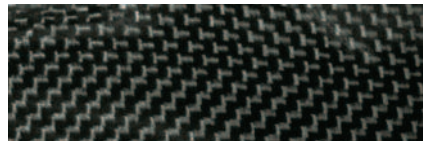
## **Makassar Wood**

Makassar ebony is dark and distinctive with a modern, elegant look. The deep black heartwood has reddish-brown lines and a dramatic, marble-like texture.



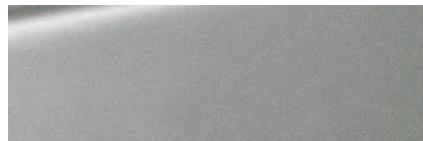
## **Carbon Fiber**

Carbon Fiber is a light but highly durable material with motorsport origins. Its high-tech look gives a sporty feel to the interior.



## **Aluminum**

Aluminum or Aluminum-Look is a cool, elegant material that also reflects a classic motorsport heritage.



## **Stainless Steel**

High-quality alloyed steel is resistant to both heat and corrosion. A definitive, enduring material for a distinguished look.





Exterior package in matte Aluminum-Look, mirror attachment-point finishers painted, rear apron grilles and side strips with model designation

## Exclusive options

### Exterior.

Option			Code	Page
	Cayman	Cayman S		
• AeroKit Cayman	○	○	XAM	6, 7
• Exterior package in matte Aluminum-Look	○	○	DAF	13, 20
• Spoiler lips in Aluminum-Look	○	○	CNX	13
• Wing mirror casing in matte Aluminum-Look	○	○	CNW	–
• Painted spoiler lips*	○	●	CNJ	1
• Mirror attachment-point finishers painted*	○	○	CMA	12, 20
• Painted front air-intake grilles*	○	○	CAF	13

– not available   ○ extra-cost option   ● standard equipment



Rear apron grilles



Headlight cleaning-system cover painted\*

## Exterior.

Option			Code	Page
	Cayman	Cayman S		
• Rear side air-intake grilles painted in a contrasting exterior color	<input type="radio"/>	<input type="radio"/>	CAE	–
• Rear apron grilles	<input type="radio"/>	<input type="radio"/>	XAU	12, 21
• Headlight cleaning-system cover painted*	<input type="radio"/>	<input type="radio"/>	CGA	21
• Side strips with model designation	<input type="radio"/>	<input type="radio"/>	CMX	12, 20
• Model designation on rear lid painted*	<input type="radio"/>	<input type="radio"/>	CUC	–

\*Paint in exterior color.



Sport exhaust tailpipe



Short Shifter

## Engine, transmission and chassis.

Option			Code	Page
	Cayman	Cayman S		
• Sport exhaust tailpipe	○	○	XLS	22
• Sport exhaust system	○	○	XLF	5, 10
• Short Shifter	○	○	XCZ	22

– not available   ○ extra-cost option   • standard equipment





19-inch Carrera Sport wheel



Wheels painted in different exterior color

## Wheels.

Option			Code	Page
	Cayman	Cayman S		
• 19-inch Carrera Sport wheel*	o	o	XRR	12, 23
• Wheels painted in exterior color	o	o	XD9	6, 23
• Wheels painted in different exterior color			CRX	
Black	o	o	XDA	–
Basalt Black Metallic	o	o	XDB	4
Speed Yellow	o	o	XDC	–
Carrara White	o	o	XDD	–
Guards Red	o	o	XDE	–
• Wheel spacers on front and rear axle, 5mm	o	o	XRP	–

\*Includes wheel center cap with full-color Porsche Crest.



Door opener trim painted\*

## Interior.

Option			Code	Page
	Cayman	Cayman S		
• Door opener trim painted*	○	○	CET	24
• Door openers painted*	○	○	CMC	–
• Instrument cluster-surround painted*	○	○	CDP	25
• Switch-panel trim strip painted*	○	○	CDM	–
• Air vents painted**	○	○	CKB	25
• Air vent slats painted*	○	○	CDN	–
• Decorative trim for gear lever painted*	○	○	CDJ	–
• PDK selector gate-surround painted*	○	○	XWS	–

– not available ○ extra-cost option • standard equipment



Instrument cluster-surround painted\*



Air vents painted\*

## Interior.

Option	Cayman	Cayman S	Code	Page
• Instrument dials painted				
Sand Beige	o	o	XFD	–
Guards Red	o	o	XFG	–
Speed Yellow	o	o	XFH	–
Carrara White	o	o	XFJ	–
• Sport Chrono stop-clock dial face				
Sand Beige	o	o	CGD	–
Guards Red	o	o	CGG	–
Speed Yellow	o	o	CGH	–
Carrara White	o	o	CGJ	–

\* Paint in exterior color. This option is also available in black paint, independent of the exterior color.

\*\* Paint in exterior color.



Rear center console painted



Interior leather package door-opener trim in leather

## Interior.

Option			Code	Page
	Cayman	Cayman S		
• Rear center console painted**	○	○	XME	26
• Sport Seat backs painted**	○	○	XSA	–
• Seat belts				
Silver Grey	○	○	XSH	–
Sand Beige	○	○	XST	–
Guards Red	○	○	XSX	–
Speed Yellow	○	○	XSY	–
• PCM package painted*	○	○	CUF	–
• Door storage-compartment lighting	○	○	CEF	–

– not available ○ extra-cost option • standard equipment



Interior package in leather with Cayman design



Three-spoke steering wheel in Smooth-Finish Leather, padded with Y-shaped trim in leather

## Interior: leather and natural leather.

Option			Code	Page
	Cayman	Cayman S		
• Interior leather package	<input type="radio"/>	<input type="radio"/>	EBF	26
• Interior package in leather with Cayman design	<input type="radio"/>	<input type="radio"/>	DAY	27
• Instrument cluster-surround in leather	<input type="radio"/>	<input type="radio"/>	CWW	–
• Three-spoke sports steering wheel in Smooth-Finish Leather, padded	<input type="radio"/>	<input type="radio"/>	XPA	–
• Three-spoke multifunction steering wheel in Smooth-Finish Leather, padded	<input type="radio"/>	<input type="radio"/>	CPA	–
• Three-spoke multifunction steering wheel Y-shaped trim in leather	<input type="radio"/>	<input type="radio"/>	CDW	–

\*Paint in exterior color. This option is also available in black paint, independent of the exterior color.

\*\*Paint in exterior color.



Dashboard end trim in leather from the interior package A-pillar in leather



Windshield defroster panel and defroster vents in leather

## Interior: leather and natural leather.

Option			Code	Page
	Cayman	Cayman S		
• Steering-column in leather	○	○	XNS	8, 14
• Windshield defroster panel in leather	○	○	XV1	28
• Windshield defroster vents in leather	○	○	CNB	28
• Interior package A-pillar in leather	○	○	DAA	28
• Sun visors in leather	○	○	XMP	–
• Sun visors in two-tone leather	○	○	CW	6

– not available   ○ extra-cost option   • standard equipment



Gear lever trim in leather



PDK selector gate-surround in leather

## Interior: leather and natural leather.

Option			Code	Page
	Cayman	Cayman S		
• Interior mirror in leather	○	○	CVW	6
• Switch-panel decorative trim in leather	○	○	CVP	–
• PCM package in leather	○	○	CUR	14
• Gear lever trim in leather	○	○	CDZ	29
• PDK selector gate-surround in leather	○	○	XWU	7, 29



Rear center console in leather, storage-compartment cover with Porsche Crest and seat-belt buckles in leather



Inner door-entry guards in leather

## Interior: leather and natural leather.

Option			Code	Page
	Cayman	Cayman S		
• Rear center console in leather	○	○	XMZ	14, 30
• Storage-compartment cover with Porsche Crest	○	○	CPT	30
• Storage-compartment cover with Cayman S logo	–	○	CUV	–
• Clothes hooks on seat backrests in leather	○	○	CVY	–
• Porsche Crest embossed on headrests	○	○	XSC	11

– not available ○ extra-cost option • standard equipment





Floor mats with leather surround



Storage-compartment cover in Alcantara® with Porsche logo

## Interior: leather and natural leather.

Option			Code	Page
	Cayman	Cayman S		
• Seat-belt buckles in leather	○	○	CDT	14, 30
• Fuse box cover in leather	○	○	CUJ	37
• Inner door-entry guards in leather	○	○	CTG	30
• Floor mats with leather surround	○	○	CJX	–
• Key pouch in leather	○	○	CPU	–



Interior: Alcantara®

## Interior: Alcantara®.

Option			Code	Page
	Cayman	Cayman S		
• Door trim package in Alcantara®	○	○	CLF	32
• Steering wheel in Alcantara®	○	○	CLA	32
• Switch-panel trim strip in Alcantara®	○	○	CLE	32
• Gear/handbrake levers in Alcantara®	○	○	DAT	32
• PDK selector/handbrake lever in Alcantara®	○	○	DAP	–
• Storage-compartment cover in Alcantara® with Porsche logo	○	○	CLG	31

– not available   ○ extra-cost option   • standard equipment



Interior: Makassar wood

## Interior: Makassar wood, Carbon Fiber, Aluminum-Look.

Option	Cayman	Cayman S	Code	Page
• Door finishers				
Makassar wood	o	o	XTT	33
Carbon Fiber	o	o	XTL	8, 34
Aluminum-Look	o	o	EBJ	14, 34
• Rear center console				
Makassar wood	o	o	XJT	33
Carbon Fiber	o	o	XMJ	8, 34
Aluminum-Look	o	o	XCK	34



Interior: Carbon Fiber



Interior: Aluminum-Look



Instrument cluster-surround in Aluminum-Look, three-spoke multifunction steering wheel for PDK in Aluminum-Look, switch-panel trim strip and air vent slats in Aluminum-Look

## Interior: Aluminum-Look/stainless steel.

Option			Code	Page
	Cayman	Cayman S		
• Instrument cluster-surround in Aluminum-Look	○	○	CWW	14, 35
• Three-spoke multifunction steering wheel in Aluminum-Look	○	○	XPV	–
• Three-spoke multifunction steering wheel for PDK in Aluminum-Look	○	○	XPU	14, 35
• Three-spoke multifunction steering wheel Y-shaped trim in Aluminum-Look	○	○	CDD	–
• Air vent slats in Aluminum-Look	○	○	CDA	14, 35
• Switch-panel trim strip in Aluminum-Look	○	●	CDE	14, 34



Gear/handbrake levers in Aluminum I

## Interior: Aluminum-Look/stainless steel.

Option			Code	Page
	Cayman	Cayman S		
• Gear/handbrake levers in Aluminum I	○	○	ECA	36
• Gear/handbrake levers in Aluminum I (leather in color to sample)	○	○	DAX	–
• Gear/handbrake levers in Aluminum II	○	○	ECC	–
• Gear/handbrake levers in Aluminum II (leather in color to sample)	○	○	DAW	–
• PDK selector/handbrake lever in Aluminum	○	○	ECB	14, 17, 37
• Handbrake lever in Aluminum II	○	○	XFP	–
• PDK selector/handbrake levers (leather in color to sample)	○	○	DAZ	–
• Handbrake lever in Aluminum II with stitching in deviating color	○	○	CFP	–

– not available   ○ extra-cost option   • standard equipment



Fuse box cover in leather, sports-style footrest



Gear lever trim in Aluminum-Look, PDK selector in Aluminum

## Interior: Aluminum-Look/stainless steel.

Option	Cayman	Cayman S	Code	Page
• Gear lever trim in Aluminum-Look	○	●	CDF	37
• PCM package in Aluminum-Look	○	○	CCP	–
• PDK selector gate-surround in Aluminum-Look	○	○	XWR	–
• Sports-style footrest	○	○	XXZ	37



Door-entry guards in stainless steel

## Door-entry guards.

Option			Code	Page
	Cayman	Cayman S		
• Door-entry guards in Carbon Fiber	◦	◦	X69	39
• Door-entry guards in Carbon Fiber, illuminated	◦	◦	CXD	39
• Door-entry guards in stainless steel	◦	◦	X70	38
• Door-entry guards in stainless steel, illuminated	◦	◦	CXB	–

– not available ◦ extra-cost option • standard equipment





Door-entry guards in Carbon Fiber



Door-entry guards in Carbon Fiber, illuminated

# Designing your Porsche

**How do we build the perfect Porsche?**

**We'll leave that up to you.**

Those who build a Porsche share something in common with those who purchase one: an opportunity to create the automobile of their dreams. A Porsche is a unique breed, designed by inquisitive minds at Weissach in response to one incessant question: "How can we make it perfect?"

Ultimately, it's a question each owner must answer. Which is why Porsche Exclusive offers such a wide variety of options for celebrating the pure joy of driving with a heightened sense of style and luxury. It's an experience for which there is, quite literally, no substitute.

For more information on our entire range of Exclusive options, pricing and delivery timetables, please contact your authorized Porsche dealer and ask to speak

with a sales consultant. The possibilities are limited only by your imagination—and are covered by your standard vehicle warranty.

A philosophy of relentless improvement has driven every Porsche for more than a half century. With Porsche Exclusive, the process of improvement has never been easier. Or more rewarding.





### **Porsche Financial Services**

Competitive, convenient and carefully crafted financing options can be customized to meet your needs. Ask your certified Porsche Sales Consultant for details.



### **Porsche Approved Pre-Owned**

Only the best Porsche cars earn the right to be called "Certified." A meticulous 111-point inspection, a 2-year or 50,000-mile Limited Warranty, and 24-hour Roadside Assistance make this program one of a kind. Contact your Porsche dealer for details.

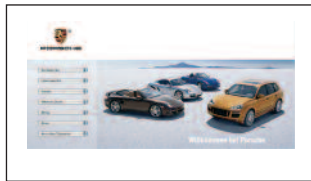


### **Porsche Tequipment**

Personalize your Porsche at any time after purchase with the Tequipment range of approved accessories. Designed exclusively for your Porsche, every product is fully guaranteed.

---

## Service



### **Porsche Online**

For all the latest news and information from Porsche, go to [www.porscheusa.com](http://www.porscheusa.com).

---

### **Porsche Design Driver's Selection**

Our distinctive collection of clothing and accessories combines timeless elegance with unmistakable quality. Visit your local Porsche dealer or shop online at [porsche.com/shop](http://porsche.com/shop).

### **Porsche Clubs**

With more than 120,000 members worldwide in 60 countries, know you are not alone in your passion for Porsche. Learn more about the brand and meet other Porsche enthusiasts just like yourself. Visit [porsche.com](http://porsche.com) for more information.

### **Porsche Sport Driving School**

Develop your skill and explore your Porsche with the Porsche Sport Driving School. Learn firsthand from famed Porsche Racing drivers while they teach you at a world-class racing facility. Visit [porschedriving.com](http://porschedriving.com) for more information.



Ask your Porsche dealer for the latest brochures from Porsche Exclusive, Porsche Tequipment and Porsche Design Driver's Selection.



Porsche Cars North America, Inc.  
980 Hammond Drive, Suite 1000  
Atlanta, Georgia 30328



**Mixed Sources**

Product group from well-managed  
forests, controlled sources and  
recycled wood or fiber

[www.fsc.org](http://www.fsc.org) Cert no. SCS-COC-00533  
© 1996 Forest Stewardship Council



Dr. Ing. h.c. F. Porsche AG is the owner of numerous trademarks, both registered and unregistered, including without limitation the Porsche Crest®, Porsche®, Boxster®, Carrera®, Cayenne®, Cayman™, Panamera®, Tiptronic®, VarioCam®, PCM®, 911®, 4S®, FOUR, UNCOMPROMISED<sup>SM</sup> and the model numbers and distinctive shapes of the Porsche automobiles, such as the federally registered 911 and Boxster automobiles. The third-party trademarks contained herein are the properties of their respective owners. Specifications, performance standards, standard equipment, options, and other elements shown are subject to change without notice. Some options may be unavailable when a car is built. Some vehicles may be shown with non-U.S. equipment. Please ask your dealer for advice concerning the current availability of options and verify the optional equipment that you ordered. Porsche recommends seat-belt usage and observance of traffic laws at all times.